

# CSD SERIES

## TUBE & PIPE HANGERS WITH ZERO PUDDLE INSERTS

### APPLICATIONS:

- Cleanrooms and mechanical areas, including but not limited to the biotech, pharmaceutical, food processing, beverage, dairy, cosmetic, chemical, water treatment, and semiconductor industries.
- Low flow & low pressure systems with moderate vibration: WFI, SIP, CIP, process, utility & instrument lines, WFI, SIP, CIP, process, utilities & instrument lines.

### SIZES:

- Support Range: 1/4" - 6" Tube and 1/2" - 6" Pipe for Copper and Conduits, including PVC Coated Pipe and EMT Conduit.
- Tight fit Anchors and loose fit Guides for thermal cycling are offered.

### FEATURES:

- Reduced OD allows hanger to be encased under the insulation's jacket
- ZERO PUDDLE Silicones inserts raised geometry facilitates drainage of liquids on vertical/riser lines creating, reducing downtime.
- There are no exposed threads or openings.

### MATERIALS:

- 304 and 316 stainless steels
- ZERO PUDDLE inserts are FDA grade silicone rubber

### SPECIFICATIONS:

- Intermittent temperatures from -40°F to 320°F
- Continuous temperatures from -20°F to 302°F - Contact Syntiro with continuous application's environmental details.

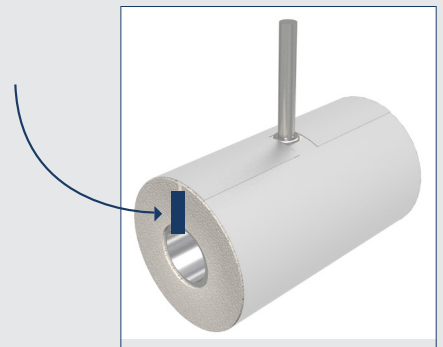
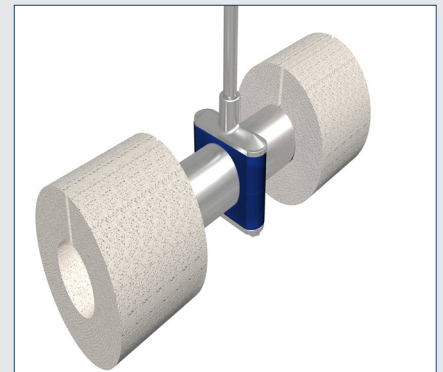
### BENEFITS:

- Guides with loose fit allow the line to freely expand and contract during thermal cycling, preventing undue stress to welds.
- Hanger's threaded section is elongated, increasing the housing's elevation adjustment aiding in slope alignment.
- Insulation Envelope "IE": Reduced OD allows the hanger to be buried under the insulation jacket.
- Insulation Thickness: Line's ODs are Encased Under Insulation
  - 1.0" of insulation : 1/2" Tube (0.5") to 3" Copper (3.125")
  - 1.5" of insulation : 3" Pipe (3.5") to 4" Pipe (4.50")
  - 2.0" of insulation : 6" Tube (6.0") to 6" Pipe (6.625")
- There are no exposed threads or openings in the hardware's plates.
- All plates are cleaned and polished.
- Hanger threads match the MSS 69 rod OD requirement.

### ZERO PUDDLE INSERT



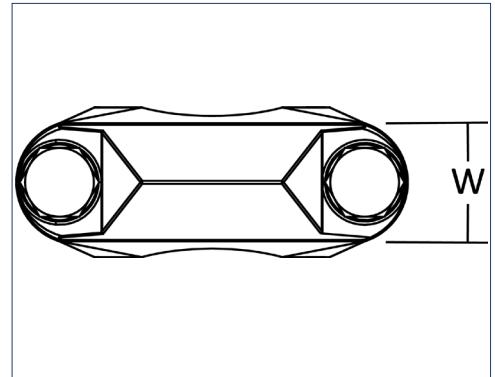
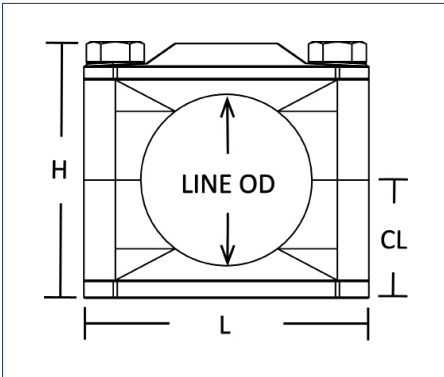
### INSULATION ENVELOPE "IE"



Refer to [www.syntirocorp.com](http://www.syntirocorp.com) or call Syntiro for most up to date information

# WELD MOUNT - CSDW

FOR ATTACHMENT: Bottom plate is welded to the mounting rod or directly to a structure



for 316 hardware substitute 304 with 316

Tube Size	Line OD	H	L	PLATES W	CL	Part Number (anchor/tight fit)	Part Number (guide/loose fit)
1/4"	0.25	1.51	1.93	0.75	0.69	CSDW0.25T304ZP	CSDW0.25T304ZG
3/8"	0.38	1.51	1.93	0.75	0.69	CSDW0.38T304ZP	CSDW0.38T304ZG
1/2"	0.50	1.51	1.93	0.75	0.69	CSDW0.50T304ZP	CSDW0.50T304ZG
3/4"	0.75	1.73	1.93	0.75	0.79	CSDW0.75T304ZP	CSDW0.75T304ZG
1"	1.00	1.73	1.93	0.75	0.79	CSDW1.0T304ZP	CSDW1.0T304ZG
1 1/2"	1.50	2.16	2.49	0.75	1.03	CSDW1.5T304ZP	CSDW1.5T304ZG
2"	2.00	2.71	2.99	0.88	1.31	CSDW2.0T304ZP	CSDW2.0T304ZG
2 1/2"	2.50	3.25	3.36	0.88	1.55	CSDW2.5T304ZP	CSDW2.5T304ZG
3"	3.00	3.97	3.99	0.88	1.91	CSDW3.0T304ZP	CSDW3.0T304ZG
4"	4.00	4.87	5.10	1.00	2.39	CSDW4.0T304ZP	CSDW4.0T304ZG
6"	6.00	6.69	7.26	1.25	3.36	CSDW6.0T304ZP	CSDW6.0T304ZG
Pipe Size	Line OD	H	L	PLATES W	CL	Part Number (anchor/tight fit)	Part Number (guide/loose fit)
1/2"	0.840	1.73	1.93	0.75	0.79	CSDW0.50P304ZP	CSDW0.50P304ZG
3/4"	1.050	1.73	1.93	0.75	0.79	CSDW0.75P304ZP	CSDW0.75P304ZG
1"	1.315	2.16	2.49	0.75	1.03	CSDW1.0P304ZP	CSDW1.0P304ZG
1 1/4"	1.660	2.75	2.99	0.88	1.31	CSDW1.25P304ZP	CSDW1.25P304ZG
1 1/2"	1.900	2.75	2.99	0.88	1.31	CSDW1.5P304ZP	CSDW1.5P304ZG
2"	2.375	3.25	3.36	0.88	1.47	CSDW2.0P304ZP	CSDW2.0P304ZG
2 1/2"	2.875	3.68	3.74	0.88	1.77	CSDW2.5P304ZP	CSDW2.5P304ZG
3"	3.500	4.15	4.48	1.00	2.06	CSDW3.0P304ZP	CSDW3.0P304ZG
4"	4.500	5.27	5.10	1.00	2.58	CSDW4.0P304ZP	CSDW4.0P304ZG
6"	6.625	7.19	7.73	1.25	3.60	CSDW6.0P304ZP	CSDW6.0P304ZG